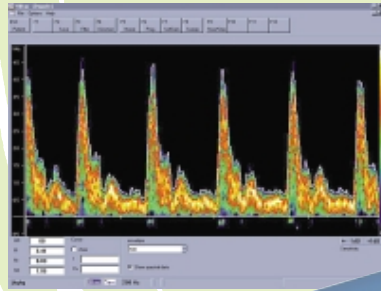


Advanced Medical Pocket Dopplers

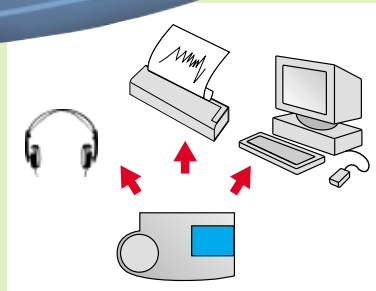
HiDop 300

Vascular and
Obstetric Doppler

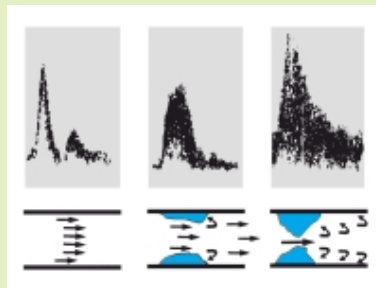


PC Windows Software:

- Real time data transfer to PC
- Sonogram in colors
- Database
- Printout / "Clipboard"

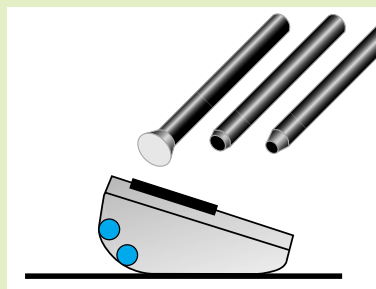


- Output for stereo headphones
- Output for analog recorder
- Output for thermal printer
- High speed interface to PC



Display:

- Graphic LCD display
- Sonogram
- Velocity waveforms
- Variety of indices



- Range of three probe options
- Holder for two probes

MTB

MEDIZINTECHNIK BASLER AG
Technoparkstrasse 1
CH-8005 Zurich, Switzerland
Phone +41-1-445 15 60
Fax +41-1-445 15 61

More information at www.hidop.com

Product Specifications

Doppler:	CW 4MHz and CW 8MHz, bidirectional CW 2MHz, unidirectional
Probes:	CW 2MHz, for obstetric applications CW 4MHz, for deep vessel diagnosis CW 8MHz, for peripheral vascular diagnosis Other probes /frequencies upon request All probes with integrated Doppler electronics
Probe identification:	Automatic with digital code
Signal Processing:	Real time FFT (Fast Fourier Transform), 256 points overlapping, 6.4 ms ACF (Auto-Correlation-Function) for fetal heart rate detection
Waveforms:	Sonogram F MAX/MIN F MAX+MIN Trend of heart rate (for 2MHz probes only)
Calculations / Indices:	Heart Rate (HR), Mean Velocity (Mean), Pourcelots Resistance Index (RI), Pulsatility Index (PI), Systolic over Diastolic Ratio (S/D)
Display:	160 x 150 pixels, black / white LCD graphic display
Replay Buffer Size:	4 displays
Frequency Ranges:	$\pm 2.5\text{kHz}$, $\pm 5\text{kHz}$, $\pm 10\text{kHz}$
Wall Thump Filters:	100Hz, 200Hz, 400Hz
Display Time:	2s, 4s, 8s 60s, 120s, 240s for trend of heart rate
Controls:	6 button control of all parameters
Memory:	Memory for user setups
Indications:	Probe Identification, Displayed Waveform, Symbol for Heart Rate Wall Thump Filter, Frequency Range, Flow Direction
Audio:	500mW speaker (mono), output for stereo headphones
Recorder:	Output for analog recorder
Data Interface:	115kbaud serial interface (standard RS232) to personal computer for on-line data transfer Serial interface to thermal printer
Power:	Alkaline batteries, 4 x 1.5V AM3/LR6 or 7.5V DC power supply
Battery Life:	Min. 6 hours of operation Display of Low Battery symbol
Automatic Power Shut Off:	3 minutes without signal
Size:	17.5cm x 11cm x 5cm
Weight:	500 grams (Including batteries and 1 probe)
Size of probes:	14mm x 110mm

Specifications are subject to change without notice

FACHHANDELSPARTNER FÜR DEUTSCHLAND:



ALPHA MEDTECH GMBH

Heiglhofstr. 1c | D-81377 München
Tel.: +49 (0)89/710 55 580 | Fax: +49 (0)89/741 40 130

www.alpha-medtech.de

FACHHANDELSPARTNER FÜR ÖSTERREICH:



KPH-ALPHA MEDTECH GMBH

Forellenweg 12/3 | A-6392 St. Jakob i.H.
Tel.: +43 (0)5354/887 49-0 | Fax: +43 (0)5354/887 49-50 | E-Mail: office@kph.at
Niederlassung/Ausstellungsraum: Maria-Theresia-Str. 41 | A-4600 Wels

www.kph.at